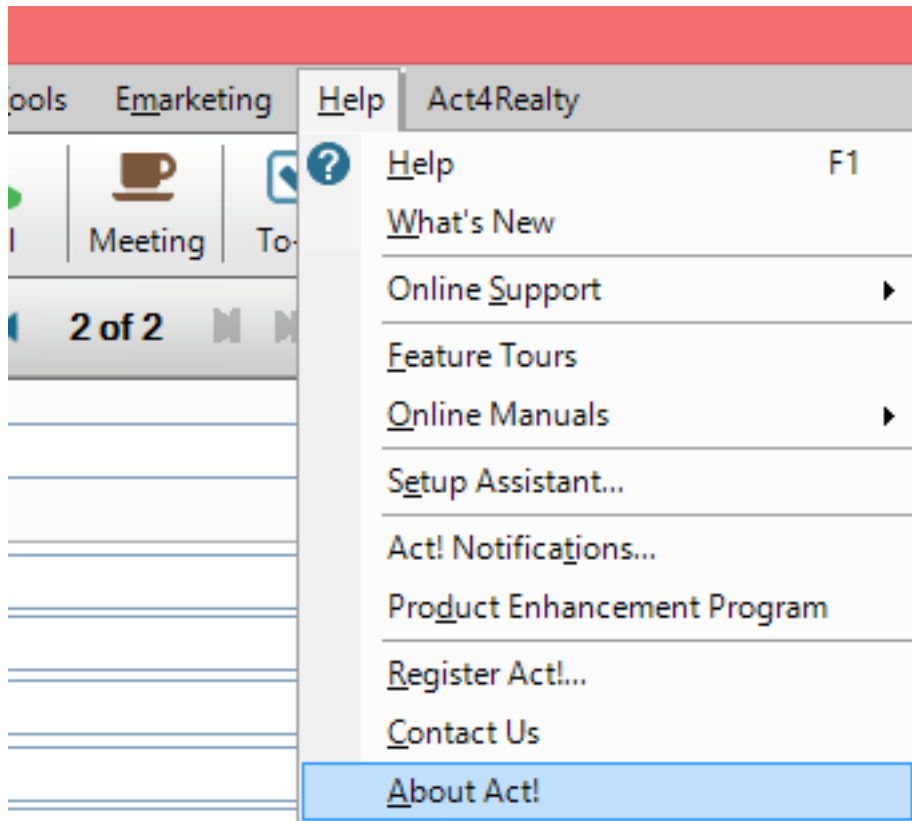


Knowtifier

How do I find my Act! database PAD file?

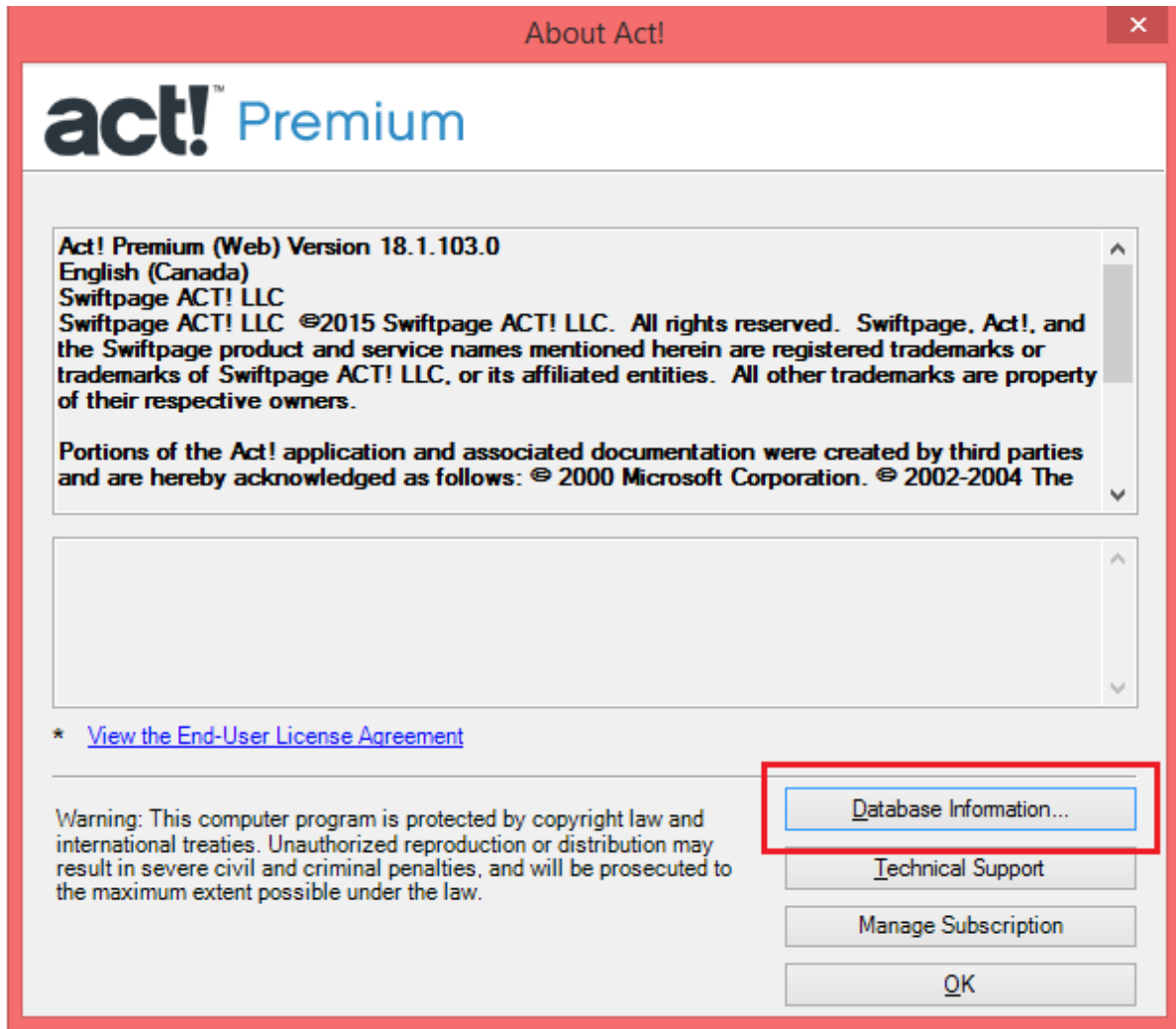
To find your database PAD file, please follow the steps below:

1. Log in to your Act! database.
2. Click on the menu **Help > About Act**

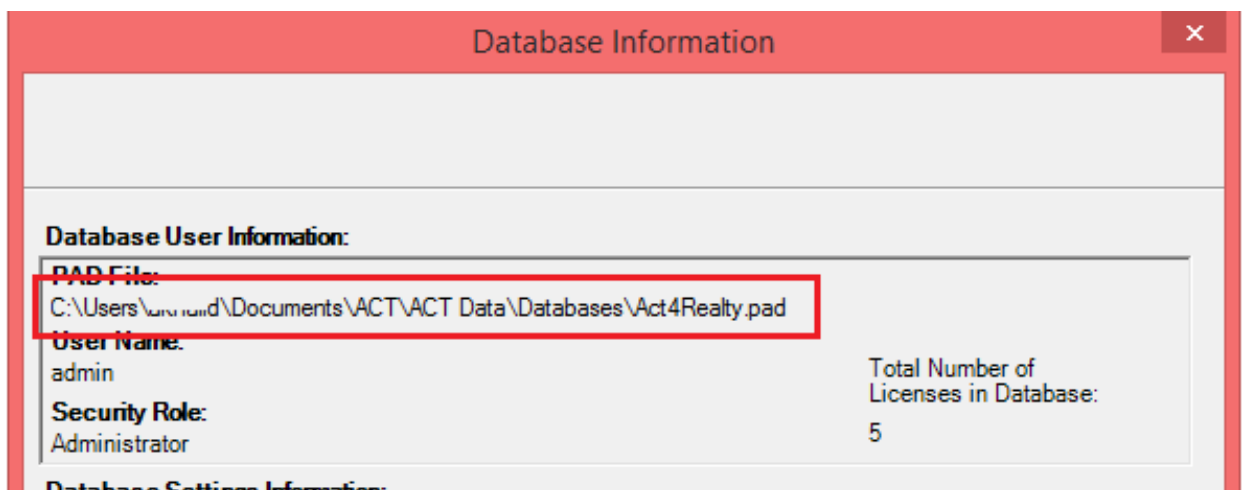


3. Click the button **Database Information**

Knowtifier



4. The PAD file location is displayed near the top of the window. You can now copy and paste this location in the other software that requires this PAD file.



Unique solution ID: #1007
Author: Ahsan
Last update: 2016-12-12 18:21